

Local-only tools for AI validation



Bias testing, synthetic data
generation and more...



What are *local-only* tools?

Leveraging computing power of local devices



No reliance on cloud platforms



Local computing: Using the computing power of user's computer or phone for tasks that don't require a supercomputer on a remote server



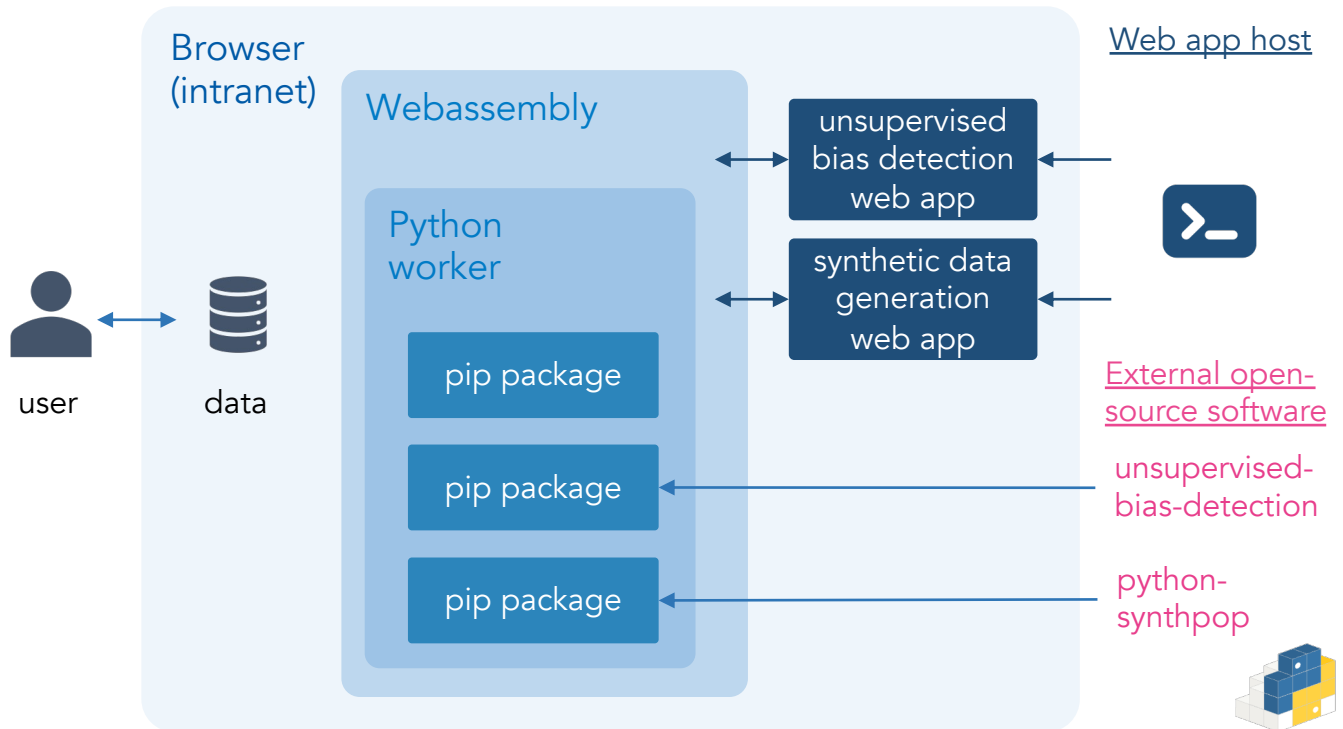
Local storage: data are processed in the browser, don't leaving your computer and the environment of your organization*

* if proper enterprise browser security protocols are followed

Architecture of *local-only* computing

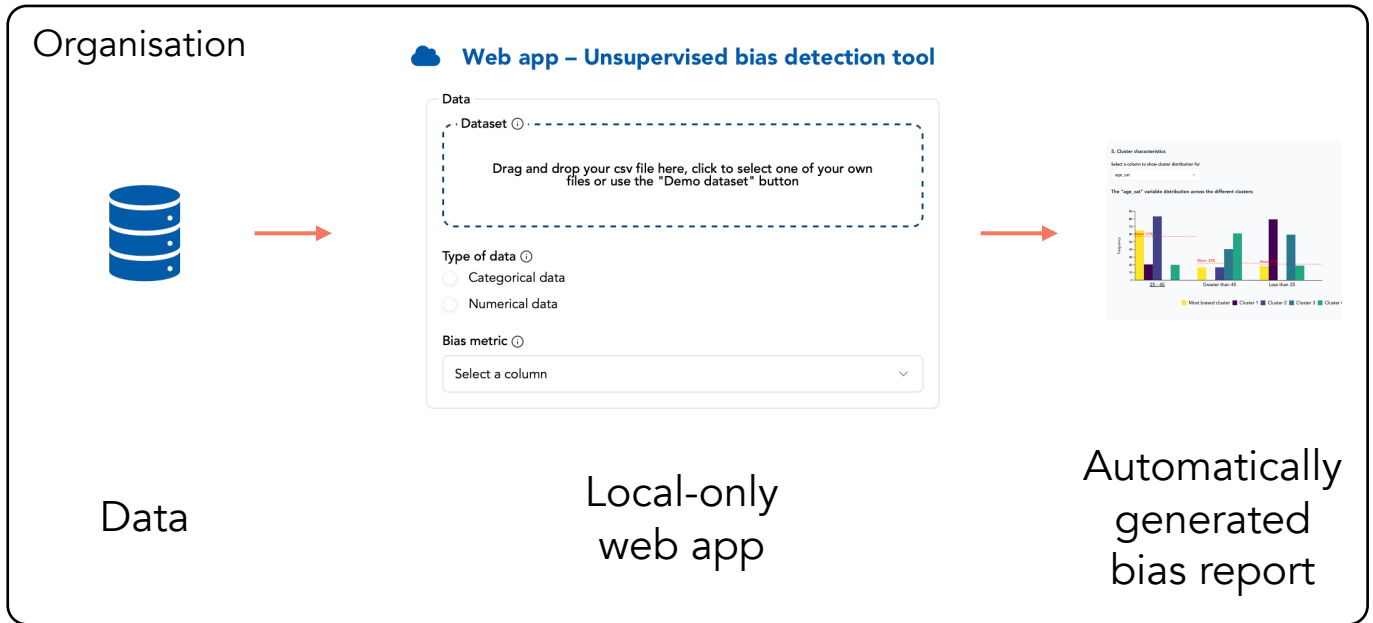
Tools run in your browser, providing access to state-of-the art (open-source) software

Organisation



Example 1 – Anomaly detection for bias testing in algorithmic systems

Making it easier for organisations to perform bias testing without access to sensitive data attributes



Available as [demo](#)
on website of
Algorithm Audit



[Github](#)



Available as [pip](#)
[package](#) **unsupervised-**
bias-detection

Example 2 – Local-only synthetic data generation

Helping organisations in generating synthetic data

Organisation



Data

🔍 Synthetic data generation tool beta

Source data

Drag and drop your csv file here, click to select one of your own files or use the "Demo dataset" button

Method ○

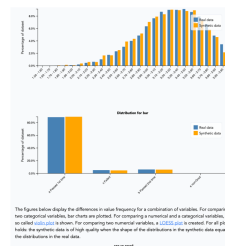
☒ CART

☐ Gaussian Copula

Number of synthetic datapoints (1000)



Local-only
web app



Automatically
generated
evaluation report



Available as [demo](#)
on website of
Algorithm Audit



[Github](#)



Available as [pip package](#)
[python-synthpop](#)

Advantages of local-only web apps

“There is no cloud, it’s just someone else’s computer”

Feature	Cloud solution	Local-only tool
Data processing	🤔 Data is processed on external server outside the organisation’s control	😊 Data processed on the local computer, confidentiality ensured
Service reliability	🤔 Service shuts down? Lose everything!	😊 Works completely offline once loaded
Cost structure	🤔 Recurring costs for compute, storage, and data transfer	😊 No ongoing server costs, bandwidth charges, or usage fees

Developed and tested in collaboration with Dutch public sector organisations

Innovation grant 2024-25

Dutch Ministry of the Interior



Ministerie van Binnenlandse Zaken en
Koninkrijksrelaties

Dutch Executive Agency for Education



Dienst Uitvoering Onderwijs
Ministerie van Onderwijs, Cultuur en
Wetenschap

Supported by philanthropic organisations

SIDN Fund

SIDNfonds

European AI & Society Fund

European
Artificial Intelligence
& Society Fund



Develop local-first tools tailored for your organisation

Learn more during one of our lunch webinars

NL [\[link\]](#)

Tuesday June 10th
12h00-13h00 CET

EN [\[link\]](#)

Friday June 13th
12h00-13h00 CET

Direct support

Reach out to info@algorithmaudit.eu

Building *public knowledge* for *ethical algorithms*

Join the
discussion!



www.algorithmaudit.eu



www.linkedin.com/company/algorithm-audit



info@algorithmaudit.eu



www.github.com/NGO-Algorithm-Audit

This work is licensed under the a [Creative Commons Attribution 4.0 International License](https://creativecommons.org/licenses/by/4.0/)

